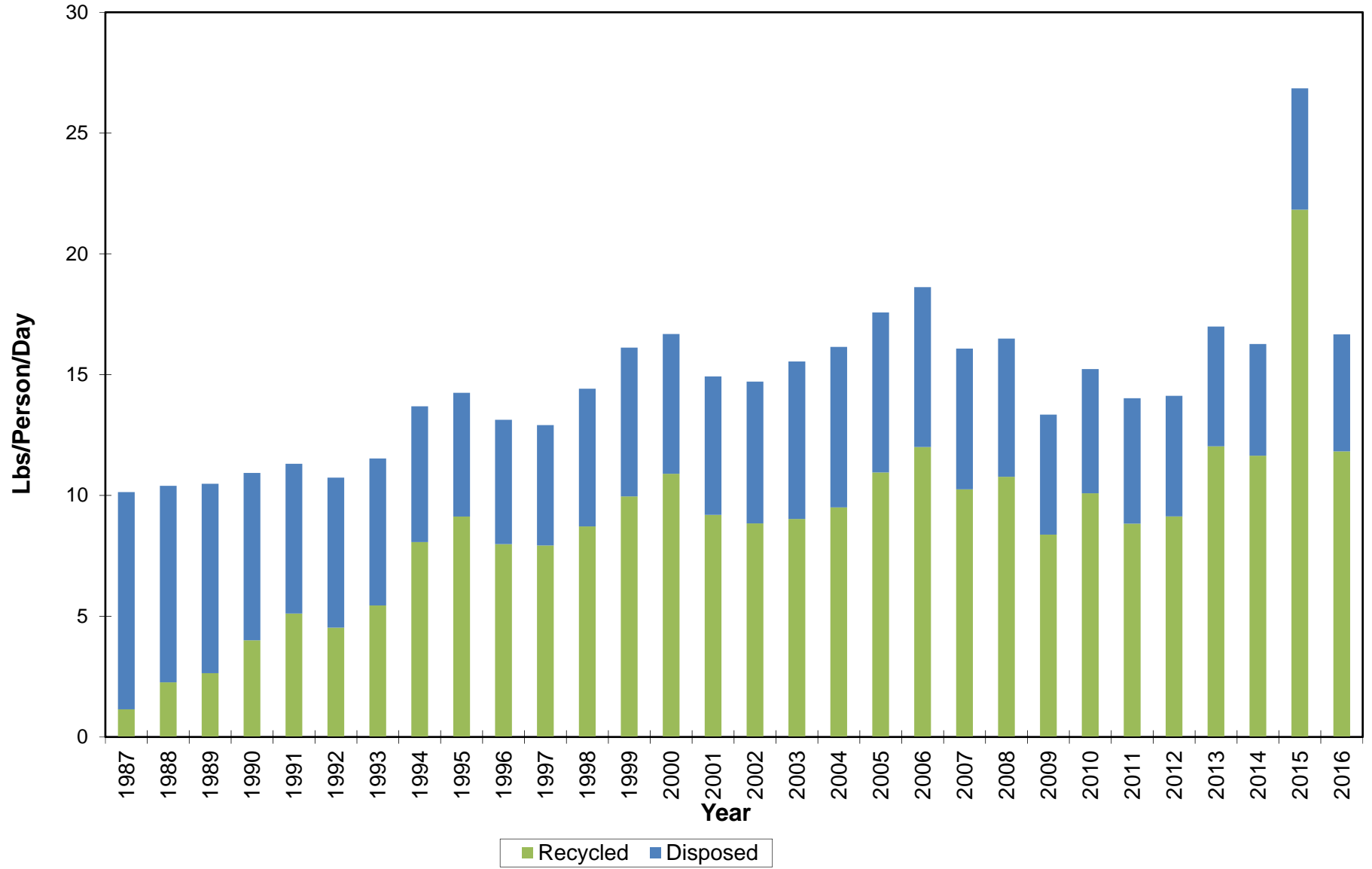
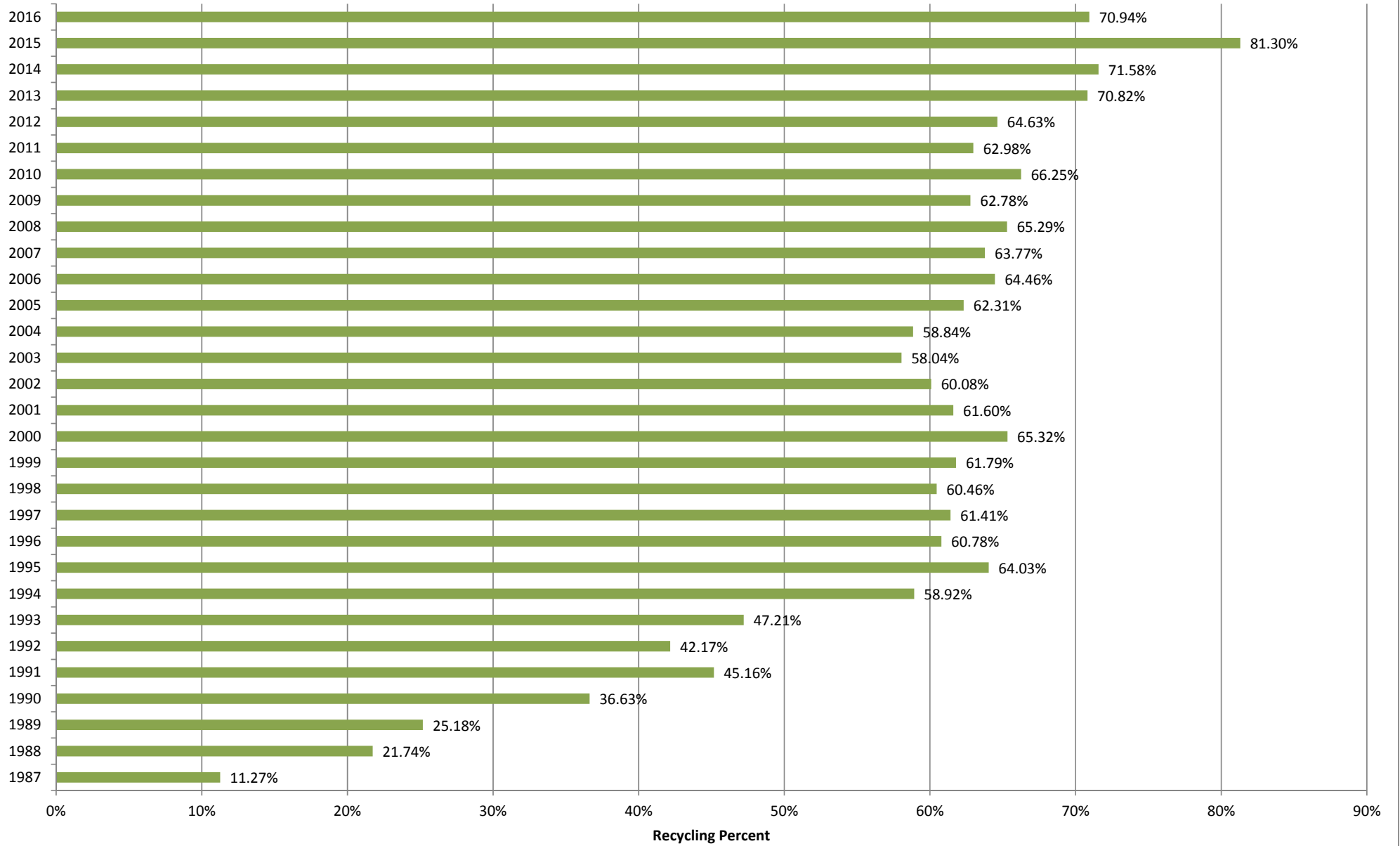


**Middlesex County Waste Disposed Vs. Waste Recycled Chart**



## Middlesex County Recycling Rates



**MIDDLESEX COUNTY WASTE DISPOSED VS. RECYCLED 1987 - 2016**

Year	Total Disposed	MSW Disposed	Total Recycled	MSW Recycled	Total Generated	Total % Recycled	MSW % Recycled	Pop.	Lbs. per Person/Day	Lbs. per Person/Day Recycled	Lbs. per Person/Day Disposed
1987	1,060,000		134,605		1,194,605	11.27%		645,709	10.14	1.14	9.00
1988	970,000		269,397		1,239,397	21.74%		653,218	10.40	2.26	8.14
1989	945,042		318,100		1,263,142	25.18%		660,490	10.48	2.64	7.84
1990	849,119		490,796		1,339,915	36.63%		671,811	10.93	4.00	6.93
1991	766,163		631,035		1,397,198	45.16%		676,904	11.31	5.11	6.20
1992	773,395		563,940		1,337,335	42.17%		682,661	10.73	4.53	6.21
1993	763,135		682,597		1,445,732	47.21%		687,299	11.53	5.44	6.08
1994	711,080		1,019,740		1,730,820	58.92%		692,900	13.69	8.06	5.62
1995	653,229	395,099	1,162,904	335,025	1,816,133	64.03%	45.89%	698,494	14.25	9.12	5.12
1996	660,058	410,558	1,022,986	365,468	1,683,044	60.78%	47.09%	702,485	13.13	7.98	5.15
1997	643,705	405,829	1,024,508	380,329	1,668,213	61.41%	48.38%	708,118	12.91	7.93	4.98
1998	741,216	429,286	1,133,615	374,036	1,874,831	60.46%	46.56%	712,638	14.42	8.72	5.70
1999	806,790	464,660	1,304,672	452,425	2,111,462	61.79%	49.33%	717,949	16.11	9.96	6.16
2000	794,867	506,007	1,497,168	337,861	2,292,035	65.32%	40.04%	752,942	16.68	10.90	5.78
2001	796,136	509,556	1,277,321	349,230	2,073,457	61.60%	40.67%	761,353	14.92	9.19	5.73
2002	823,549	528,674	1,239,504	319,622	2,063,053	60.08%	37.68%	768,578	14.71	8.84	5.87
2003	921,516	593,459	1,274,808	315,847	2,196,324	58.04%	34.73%	774,303	15.54	9.02	6.52
2004	945,374	608,824	1,351,694	300,678	2,297,068	58.84%	33.06%	779,481	16.15	9.50	6.65
2005	948,122	614,338	1,567,684	367,291	2,515,806	62.31%	37.42%	784,437	17.57	10.95	6.62
2006	946,161	614,876	1,715,885	409,186	2,662,046	64.46%	39.96%	783,371	18.62	12.00	6.62
2007	832,363	618,891	1,465,119	356,065	2,297,482	63.77%	36.52%	783,029	16.08	10.25	5.82
2008	824,184	587,891	1,550,614	374,809	2,374,798	65.29%	38.93%	789,102	16.49	10.77	5.72
2009	716,565	550,571	1,208,622	349,006	1,925,187	62.78%	38.80%	790,738	13.34	8.38	4.97
2010	759,467	553,312	1,490,991	373,473	2,250,458	66.25%	40.30%	809,858	15.23	10.09	5.14
2011	773,476	549,632	1,315,834	410,262	2,089,310	62.98%	42.74%	816,618	14.02	8.83	5.19
2012	750,449	515,039	1,371,129	392,276	2,121,578	64.63%	43.23%	823,196	14.12	9.13	5.00
2013	751,759	518,171	1,824,431	432,574	2,576,190	70.82%	45.50%	830,815	16.99	12.03	4.96
2014	706,440	518,266	1,778,972	376,411	2,485,412	71.58%	42.07%	837,339	16.26	11.64	4.62
2015	765,969	534,183	3,330,716	440,335	4,096,685	81.30%	45.18%	836,079	26.85	21.83	5.02
2016	742,364	526,832	1,812,074	408,274	2,554,438	70.94%	43.66%	839,986	16.66	11.82	4.84

Notes:

In 1993, the NJ DEP began adding in ISRI/AMRA metal figures to the recycling tonnages.

Population data from US Census 3/20/08 (2000 - 2006); 3/19/09 (2007-08); March 2010 (2009); 7/9/12 (2010, 2011); 3/14 (2012); May 2014 (2013); May 2016 (2014); May 2017 (2015); May 2018 (2016)