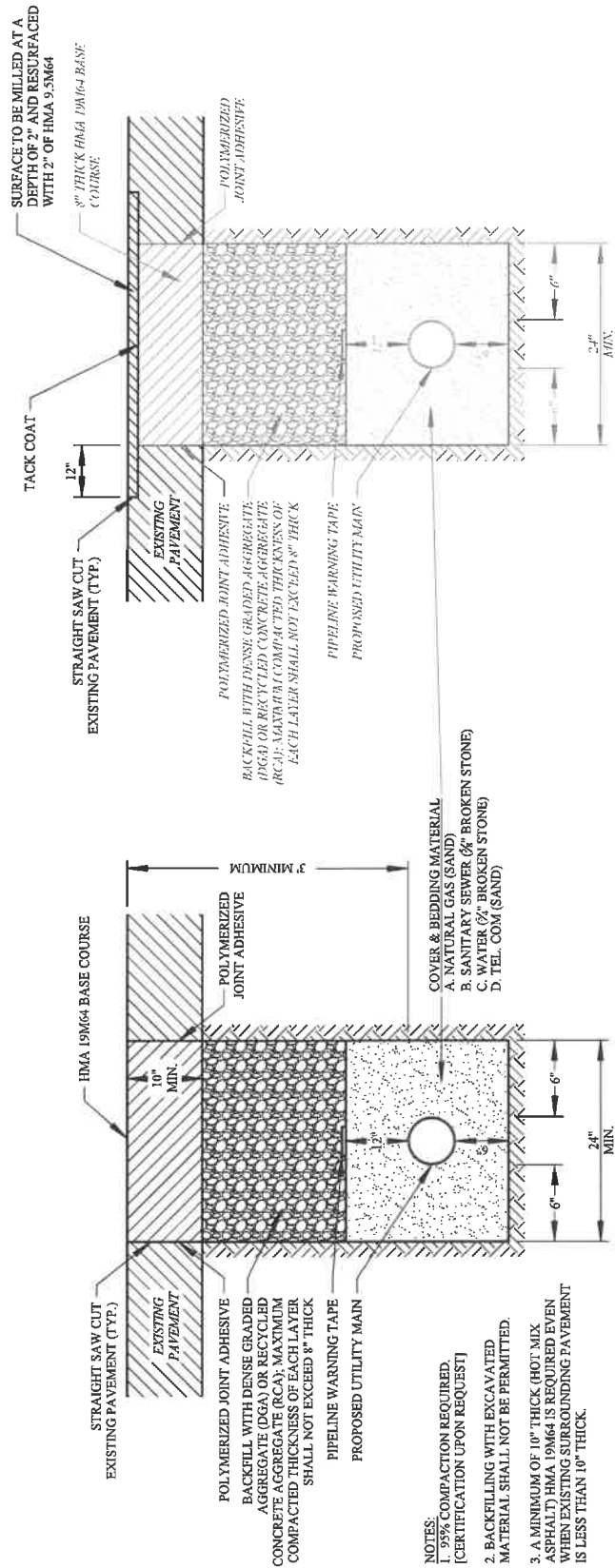


DETAIL #17



- NOTES:**
1. 95% COMPACTION REQUIRED. (CERTIFICATION UPON REQUEST)
 2. BACKFILLING WITH EXCAVATED MATERIAL SHALL NOT BE PERMITTED.
 3. A MINIMUM OF 10" THICK (HOT MIX ASPHALT) HMA 19M64 IS REQUIRED EVEN WHEN EXISTING SURROUNDING PAVEMENT IS LESS THAN 10" THICK.

TEMPORARY TRENCH RESTORATION DETAIL (PAVED AREA)

FINAL TRENCH RESTORATION DETAIL (PAVED AREA)

NOTE:

1. THE STORM SEWER TRENCH AND BEDDING DETAIL MAY BE UTILIZED AS AN ALTERNATE.
2. THE TEMPORARY TRENCH DETAIL MUST BE CONVERTED TO THE FINAL TRENCH DETAIL (NO SOONER THEN 30 DAYS AND NO LATER THAN 90 DAYS FROM COMPLETION OF TRENCH CONSTRUCTION.

Revisions	NO.	DATE	BY
	1	11/16/19	KP

Ronald Sandner
 Licensed Professional Engineer
 License No. 246E03182200
 Date 4/25/17

County of Middlesex
 Department of Infrastructure Management
 Office of Engineering/Planning/Public Works
 75 Bayard St., New Brunswick, NJ 08901

**UTILITY TRENCH AND BEDDING
 DETAIL (PAVED AREA)
 TRANSVERSE JOINT**

Scale: NOT TO SCALE
 Sheet No. 1 of 1
 Date: 4/25/17

Ronald Sandner
 Acting County Engineer
 N.J. P.E. No. 246E03182200