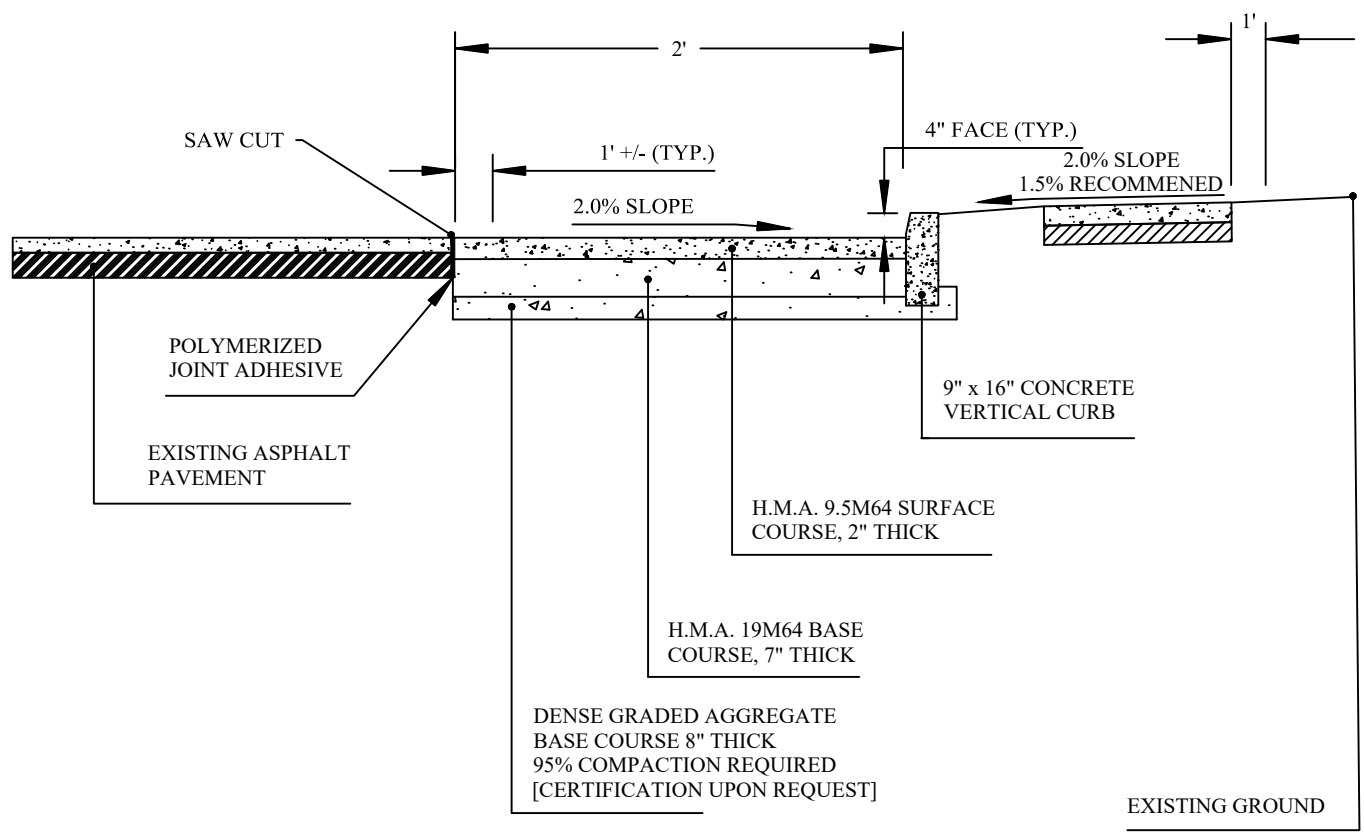


DETAIL #16

TYPICAL COUNTY CURB INSTALLATION DETAIL



- NOTE:
 1. PROVIDE SLOPE TOWARDS GUTTER LINE TO ENSURE POSITIVE DRAINAGE.

Revisions		
NO.	DATE	BY
1	1/16/19	KP

*County of Middlesex
 Department of Transportation
 Office of Engineering/Planning/Public Works
 75 Bayard St., New Brunswick, NJ 08901*

**TYPICAL COUNTY CURB
 INSTALLATION DETAIL**

Ronald Sendner *Date*
 Licensed Professional Engineer
 License No. 24GE03162200

Designed By <i>RP</i>	Drawn By <i>SPB</i>
Checked By <i>RP</i>	Approved By <i>RP</i>

*Scale: NOT to SCALE
 Sheet No. 1 of 1
 Date: 5/22/17*

Ronald Sendner
 County Engineer
 N.J. P.E. No. 24GE03162200